



FRONT ELEVATION

NOTE: ROOM SIZES ARE APPROXIMATE - REFER TO DIMENSIONS FOR FINAL ROOM SIZE.



LEFT ELEVATION

NOTE: ROOM SIZES ARE APPROXIMATE - REFER TO DIMENSIONS FOR FINAL ROOM SIZE.



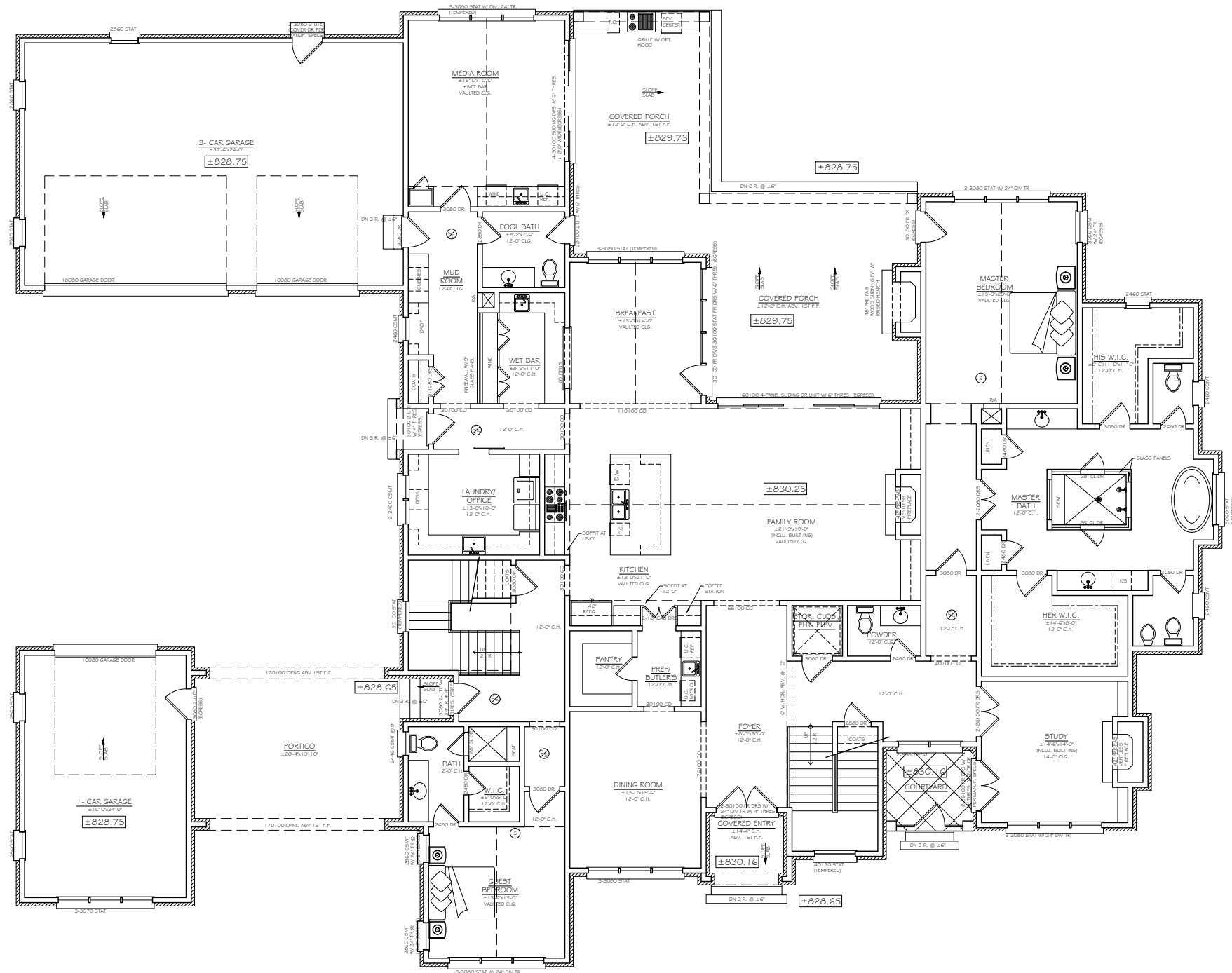
REAR ELEVATION

NOTE: ROOM SIZES ARE APPROXIMATE - REFER TO DIMENSIONS FOR FINAL ROOM SIZE.



RIGHT ELEVATION

NOTE: ROOM SIZES ARE APPROXIMATE - REFER TO DIMENSIONS FOR FINAL ROOM SIZE.



DUE TO DIFFERING METHODS OF CALCULATION, SQ. FTG. MAY VARY—SEE BUILDER TOTALS BELOW ARE TO OUTFACE OF MASONRY AND DO NOT INCLUDE VOLUME AREA.

APPROXIMATE AREA (M)	
LIVING AREA MAIN:	4781 SQ. FT.
LIVING AREA UPPER:	1746 SQ. FT.
SUBTOTAL:	6527 SQ. FT.
FIN. STOR./FUT. GAME:	320 SQ. FT.
TOTAL:	6822 SQ. FT.
GARAGE:	1437 SQ. FT.
COV. PORCHES:	813 SQ. FT.
PORTICO:	348 SQ. FT.

NOTE: ROOM SIZES ARE APPROXIMATE - REFER TO DIMENSIONS FOR FINAL ROOM SIZE.

MAIN LEVEL PLAN
12'-0" CEILING HGT. (U.N.O.)



CLAYTON-ARNOLD LOT 3

